

Coast Daily Review

Kuwait Market Performance

Monday: 08 Feb 10

KSE Price Close: 7,151.2 (49.1) ▲

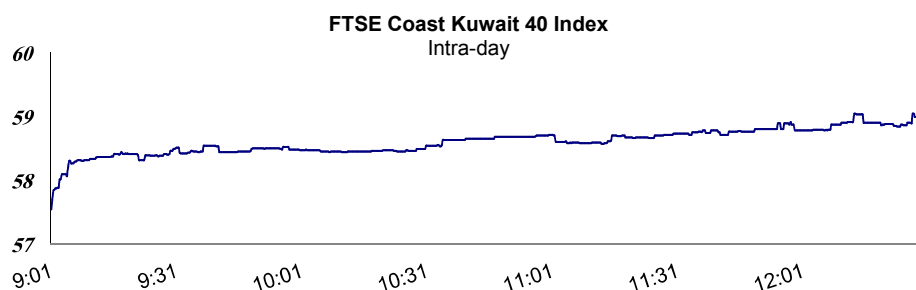
Market Today

For the second day of the week, Kuwait Stock Exchange closed with an increase in both the price and the weighted indices by 0.69% and 1.90% respectively. ICB sectors varied in performance. Food sector was the top gainer with 5.28% increase, while Petrochemicals sector was the top losing sector with 0.39% decline. On groups side, all the groups closed in green. NIC group index was the top gainer with 5.43% increase followed by Agility group with 3.73% gain.

	Today	Last	Change	% Chg.	YTD%
KSE Price Index	7,151.2	7,102.10	49.10	0.69%	2.08%
KSE Weighted Index	393.53	386.19	7.34	1.90%	2.02%
FTSE Coast 40 Index	59.07	56.79	2.28	4.01%	1.65%
Coast Fundamental Index	89.92	88.79	1.13	1.27%	2.10%

Coast Sectors	Today	Last	Change	% Chg.
Banking	423.04	418.08	4.96	▲ 1.19
Investments	247.28	242.91	4.37	▲ 1.80
Financing	186.91	184.70	2.22	▲ 1.20
Insurance	127.55	127.22	0.33	▲ 0.26
Real Estate	178.03	176.41	1.62	▲ 0.92
Industrial	368.24	360.43	7.81	▲ 2.17
Construction Material	274.36	272.50	1.86	▲ 0.68
Holding Companies	461.85	463.15	1.30	▼ 0.28
Tourism & Media	153.31	153.57	0.26	▼ 0.17
Petrochemicals	414.05	415.65	1.60	▼ 0.39
Logistics & Transport	851.79	815.70	36.10	▲ 4.43
Retailers	634.94	634.94	0.00	↔ 0.00
Education & Support	370.60	370.29	0.30	▲ 0.08
Food	423.32	402.09	21.23	▲ 5.28
IT & Telecom	542.37	518.72	23.66	▲ 4.56
General Contracting	480.12	480.63	0.51	▼ 0.11

Market Movers	No. of Companies
Issues Advanced	72
Issues Declined	34
Issues Unchanged	117



This document and its content are prepared for your personal information purposes only and it is not an offer, or the solicitation of an offer, to buy or sell a security or enter into any other agreement. Projections of potential risk or return are illustrative, and should not be taken as limitations of the maximum possible loss or gain. The information and any views expressed are given as at the date of writing and subject to change. While the information has been obtained from sources believed to be reliable we do not represent that it is accurate or complete and it should not be relied on as such. Coast Investment and Development Company, its affiliates and subsidiaries accept no liability for any direct or consequential loss arising from use of this document or its contents. At any time, Coast Investment and Development Company or its employees may have a position, subject to change, in any securities or instruments referred to, or provide services to the issuer of those securities and instruments.

P. O. Box 26755, Safat 13128 - Kuwait
 Tel: + 965 22230555
 Fax: + 965 22408932

www.coast.com.kw

Market Trade Statistics

KSE Price	Today	Last	Change	% Chg.
Market Capitalization (KD)	30,911,577,400	30,356,127,500	555,449,900	1.83
Total Traded Volume (Shares)	594,980,000	432,400,000	162,580,000	37.60
Total Traded Value (KD)	87,710,540	70,618,980	17,091,560	24.20
No. of Transactions	7,910	6,559	1,351	20.60

Volume Leaders		
	Price (fils)	Volume
JEEZAN	71	57,920,000
ALSAFWA	60	57,760,000
SAFTEC	80	43,640,000
ALSAFAT	148	36,100,000
IFA	106	28,380,000

Top 5 Sectors by Volume		
	Volume	% Chg.
Investment	122,930,000	1.80
Real Estate	117,455,000	0.92
Holding Companies	70,480,000	0.28
Telecom & IT	62,080,000	4.56
Tourism & Media	55,775,000	0.17

Top Gainers		
	Price (fils)	% Chg.
ASC	285	9.62
COAST	138	7.81
NINV	360	7.46
FOOD	1,520	7.04
OSOUL	86	6.17

Top Losers		
	Price (fils)	% Chg.
FLEX	140	26.32
SALBOOKH	89	5.32
FCEM	150	5.06
QURAINHLD	30	4.76
ALQURAIN	202	4.72

Corporate Actions

Company Name	Ex- Date	Events
Mena Real Estate Company (MENA)	31-Jan-10	Moved to Real Estate sector at regular market
Boubyan Bank	24-Jan-10	Capital increase
Real Estate Asset Management Co. (REAM)	18-Jan-10	Moved to Real Estate sector at regular market
Al-Mowasat Holding Co.	13-Jan-10	Al-Mowasat Healthcare Co.
Haj & Umrah Services Consortium Co.	13-Jan-10	Rename to Mashaer Holding Co.
KGL Logistics	7-Dec-09	New Listing

General Assemblies

Dates	Company
2010-02-18	Kuwait Syrian Holding Co.
2010-01-31	Al-Enma'a Real Estate Co.
2010-01-27	Arkan Al-kuwait Real Estate Co.
2010-01-17	Educational Holding Group
2010-01-17	Investors Holding Group Company
2010-01-13	National Co. For Consumer Industries
2010-01-12	Global Investment House.
2010-01-11	Burgan Bank
2010-01-10	The Bank Of Kuwait & The Middle East
2009-11-17	Investors Holding Group Company

Industry P/E ratios

Index	P/E
Banking	13.19
Investment	0.46
Financing	13.14
Insurance	3.29
Real Estate	18.14
Industrial	0.98
Construction Material	5.46
Holding Companies	7.72

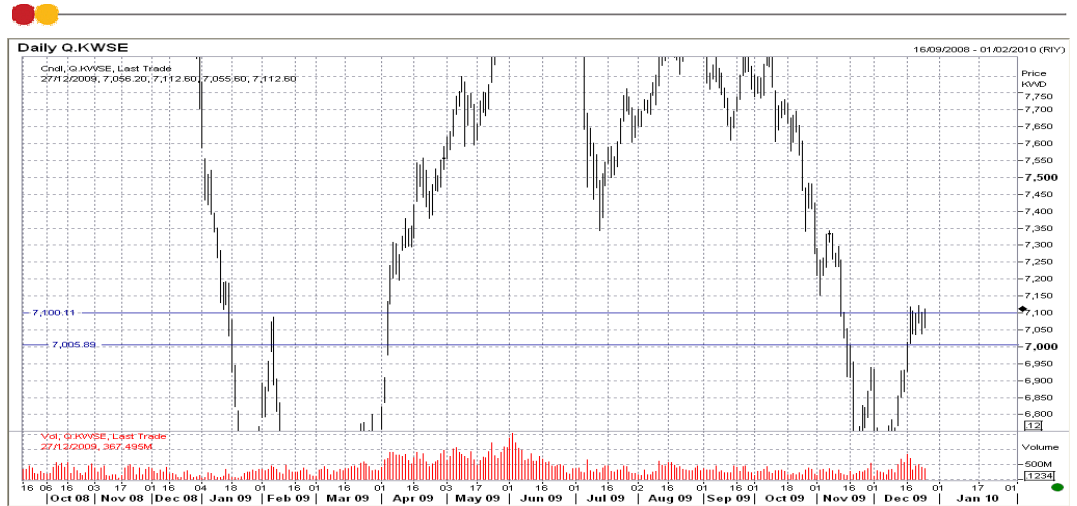
Index	P/E
Tourism & Media	4.95
Petroleum & Chemicals	9.94
Logistics & Transportation	4.21
Retailers	1.34
Educational/Support Services	9.42
Food	1.67
Telecom & IT	11.95
General Contacting	15.66
Market PE	11.81

Conventional P/E ratios

Index	P/E
Banking	11.21
Investment	1.44
Insurance	3.29
Real Estate	17.88

Index	P/E
Industrial	5.65
Services	10.54
Food	1.71
Non-Kuwaitis	7.53
Market PE	11.81

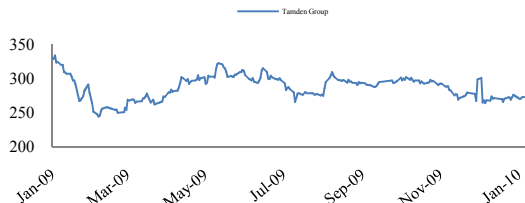
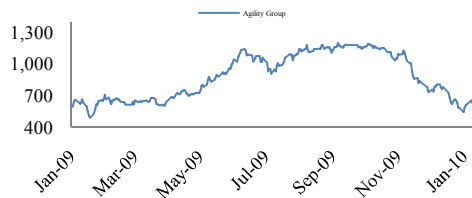
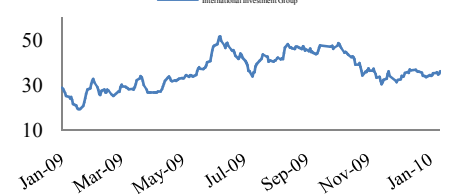
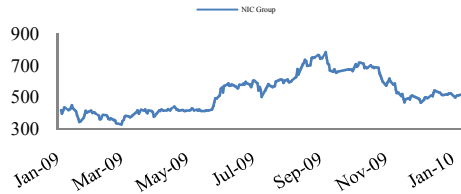
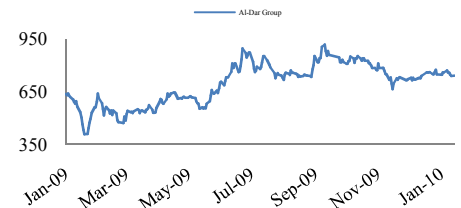
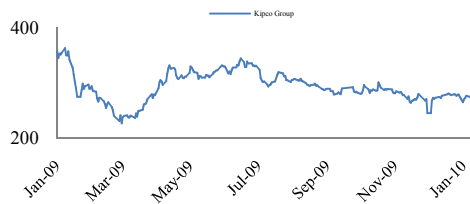
Technical Analysis



- * KSE price index is testing support level at 7,000 level.
- * Second support is at 6,700.
- * Trading activity is at moderate levels.

Groups Performance

Group	Index	Volume	Daily Return	Monthly	YTD%	P/E
KIPCO	274.83	7,970,000	1.88%	3.57%	1.49%	5.90
Al Dar	787.71	1,960,000	3.00%	10.40%	5.25%	17.75
NIC	510.26	23,922,500	5.43%	8.57%	2.45%	9.23
Int'l Invest.	34.79	9,240,000	2.37%	2.82%	2.55%	1.91
Agility	614.27	15,665,000	3.73%	4.40%	4.53%	3.59
IFA	97.83	154,935,000	0.60%	0.11%	1.06%	4.51
Tamdeen	315.46	5,560,000	0.22%	3.45%	14.20%	7.26



Sulaiman Al Abduljader
Vice President
sulaiman.jader@coast.com.kw
Ext. 508

Abdullah Al Hasawi
Senior Financial Analyst
abdulla.alhasawi@coast.com.kw
Ext. 512

Burhan Kamali
Senior Financial Analyst
burhan.kamali@coast.com.kw
Ext. 514

Yousef Al Roumi
Investment Analyst
yousef.alroumi@coast.com.kw
Ext. 578

Manal Sabbah
Investment Analyst
manal@coast.com.kw
Ext. 579

Mohammad Al Hajeri
Investment Analyst
mohammad.alhajeri@coast.com.kw
Ext. 517

Talal Al Hunaif
Investment Analyst
talal.alhunaif@coast.com.kw
Ext. 567

Zaina Al Mershed
Marketing Officer
zaina.almershed@coast.com.kw
Ext. 577

This document and its content are prepared for your personal information purposes only and it is not an offer, or the solicitation of an offer, to buy or sell a security or enter into any other agreement. Projections of potential risk or return are illustrative, and should not be taken as limitations of the maximum possible loss or gain. The information and any views expressed are given as at the date of writing and subject to change. While the information has been obtained from sources believed to be reliable we do not represent that it is accurate or complete and it should not be relied on as such. Coast Investment and Development Company, its affiliates and subsidiaries accept no liability for any direct or consequential loss arising from use of this document or its contents. At any time, Coast Investment and Development Company or its employees may have a position, subject to change, in any securities or instruments referred to, or provide services to the issuer of those securities and instruments.

Coast Investment & Development Co.
Shuhada Street, Al Sharq Area

P. O. Box 26755, Safat 13128 - Kuwait
Tel: + 965 22230555
Fax: + 965 22408932

www.coast.com.kw